



## Conservation Exploration! A Website Scavenger Hunt

### INSTRUCTIONS

1. Follow each step of the Conservation Exploration! scavenger hunt in order. Each step will navigate you throughout New England Primate Conservancy's website and give you necessary information for solving each clue.
2. After following a step, read the question below it carefully. If you follow the steps correctly, you should be able to find the necessary information on the webpage to solve the clues. Spaces are provided to write your answers.
3. When you write the answer to a question, notice that some letter spaces have a number beneath them. That means the letter in that space belongs on the scavenger hunt answer sheet. Match the number in the clue to the number on the scavenger hunt answers sheet.
4. Write the letter from the clue in the matching number space on the answer sheet. If every clue is solved correctly, the scavenger hunt answer sheet will reveal a quote by renowned ethologist\* and conservationist, Dr. Jane Goodall, whose research transformed the world's knowledge of chimpanzees.
5. We recommend printing out the Conservation Exploration! scavenger hunt answer sheet to stay organized!



*Cotton Top Tamarins*

\*An ethologist studies the behavior of animals in their natural environment

# CONSERVATION EXPLORATION!

## Page 1



**Step 1:** Begin on the New England Primate Conservancy website homepage, [www.neprimateconservancy.org](http://www.neprimateconservancy.org). Hover your mouse cursor over the “Lessons and Activities” menu. A list of 3 dropdown options will appear. Hover your mouse cursor over “Primate Themed” and select “Where Primates Live.” Scroll down the new page and watch the video titled “Where in the World Primates Live”.

**Question:** What ape species live in Asia?

\_\_\_\_\_ (8) \_\_\_\_\_ (17) \_\_\_\_\_ (138) \_\_\_\_\_ (20) \_\_\_\_\_  
\_\_\_\_\_ (24) \_\_\_\_\_ (34) \_\_\_\_\_

**Step 2:** After watching the video, continue to scroll down the same page. Stop when you find a section titled “Helpful Educational Resources”. Under this title you will find a bulleted list. Find “The Alphabet Soup of Conservation” from this list and click. Scroll down the new page to find a section titled “Watch”. Read the two short paragraphs under this heading and use the information to solve the next clue.

**Question:** What organization makes determinations about threats to species?

\_\_\_\_\_ (52) \_\_\_\_\_ (121) \_\_\_\_\_ (69) \_\_\_\_\_  
\_\_\_\_\_ (87) \_\_\_\_\_ (39) (72) \_\_\_\_\_ (16) (130) \_\_\_\_\_ (63) (122) \_\_\_\_\_  
\_\_\_\_\_ (143) \_\_\_\_\_ (82) \_\_\_\_\_

**Step 3:** Scroll down to the video under the two paragraphs. Watch “Alphabet Soup of Conservation” and use the information in the video to answer the question below.

**Question:** What is the conservation status of the bearded capuchin?

\_\_\_\_\_ (7) \_\_\_\_\_ (15) \_\_\_\_\_ (139) (54) \_\_\_\_\_ (55) (66) \_\_\_\_\_

**Step 4:** After the video you will find a section titled “How Many of Our Fellow Primates Are at Risk?” Use the information in the text to discover the answer to this two-part clue.

**Question:** 69% of primate species and subspecies are threatened by what?

\_\_\_\_\_ (108) \_\_\_\_\_ (50) \_\_\_\_\_ (131) \_\_\_\_\_



# CONSERVATION EXPLORATION!

## Page 2



**Question:** The IUCN classifies 43% of primates as what?

\_\_\_\_\_ (49) \_\_\_\_\_ (43) \_\_\_\_\_ (29)

\_\_\_\_\_ (44) \_\_\_\_\_ (78)

\_\_\_\_\_ (77)

**Step 5:** Scroll down to find the section titled “Helpful Resources”. From the bulleted list on the left, click on “What You Can Do to Help Animals and the Environment”. This link will take you to a new page. On this page you will find information on how your daily choices can impact animals and their habitats. The page is broken up into three categories, each with a linked video. Click “Watch the video to learn how...” for the first section, “Personal choices”. This will take you to a new page. Watch “Part 1: What Everyone Everywhere Can Do—Personal Choices” to solve the clue.

**Question:** According to the video, what is the easiest way to positively impact our environment?

\_\_\_\_\_ (85) \_\_\_\_\_ (1) \_\_\_\_\_ (10) \_\_\_\_\_ (141) \_\_\_\_\_ (58)

\_\_\_\_\_ (27) \_\_\_\_\_ (140) \_\_\_\_\_ (109) \_\_\_\_\_ (68)

**Step 6:** When you have finished the video, scroll down the webpage to find a section titled “Why Your Choices Matter”. Read all the text in this section to answer this three-part clue.

**Question:** What greenhouse gas is released into the atmosphere when cows burp?

\_\_\_\_\_ (142) \_\_\_\_\_ (13) \_\_\_\_\_ (84) \_\_\_\_\_ (41)

**Question:** 80% of Indonesian forests have been destroyed to clear land for what type of plantation?

\_\_\_\_\_ (47) \_\_\_\_\_ (25) \_\_\_\_\_ (110)



*Gelada*

# CONSERVATION EXPLORATION!

## Page 3



**Question:** Instead of visiting zoos, you can go outside and observe what?

\_\_\_\_\_ (59) \_\_\_\_\_ (4) \_\_\_\_\_ (80) \_\_\_\_\_ (113) \_\_\_\_\_ (22) \_\_\_\_\_ (127)

**Step 7:** Scroll back up to the top of the webpage. Beneath the “Personal Choices” video, you will find a link to watch “Part 2: What You Can Do Using Media”. Follow the link and watch the video.

**Question:** Less demand for exotic pets reduces what two harmful practices?

\_\_\_\_\_ (30) \_\_\_\_\_ (126) \_\_\_\_\_ (102) \_\_\_\_\_ (37) \_\_\_\_\_ (119) \_\_\_\_\_ (18)

\_\_\_\_\_ (5) \_\_\_\_\_ (92) \_\_\_\_\_ (111) \_\_\_\_\_ (125) \_\_\_\_\_ (93) \_\_\_\_\_ (42)

**Step 8:** When finished viewing the video, scroll down to the section titled “Why Your Actions Matter”. Read all the text in this section to answer this three-part clue.

**Question:** You should encourage your friends and family members to stop sharing videos of what?

\_\_\_\_\_ (99) \_\_\_\_\_ (12) \_\_\_\_\_ (11) \_\_\_\_\_ (53)

**Question:** You can write a Letter to the Editor of your local newspaper to educate your community about the importance of protecting what?

\_\_\_\_\_ (56) \_\_\_\_\_ (107) \_\_\_\_\_ (31) \_\_\_\_\_ (112) \_\_\_\_\_ (137) \_\_\_\_\_ (97) \_\_\_\_\_ (105) \_\_\_\_\_ (14) \_\_\_\_\_ (124)

\_\_\_\_\_ (114) \_\_\_\_\_ (61) \_\_\_\_\_ (118) \_\_\_\_\_ (32)

**Question:** Legislators represent what?

\_\_\_\_\_ (135) \_\_\_\_\_ (28) \_\_\_\_\_ (60) \_\_\_\_\_ (98) \_\_\_\_\_ (128)

\_\_\_\_\_ (26) \_\_\_\_\_ (145) \_\_\_\_\_ (9)





# CONSERVATION EXPLORATION!

## Page 4

**Step 9:** Scroll back up to the top of the webpage. Find Part 3 of the video series on the right side of the screen. Click the link to watch "Part 3: How You Can Help in Your Community".

**Question:** The video describes 3 simple choices that you can make to help animals and the environment in your community. What is the third choice listed in the video?

\_\_\_\_\_ (129) \_\_\_\_\_ (115) \_\_\_\_\_ (33) (95) (46) \_\_\_\_\_ (96) \_\_\_\_\_ (134) \_\_\_\_\_ (36) \_\_\_\_\_

\_\_\_\_\_ (103) \_\_\_\_\_  
**Step 10:** After watching Part 3, scroll down the webpage and read all the text in the "How Your Actions Matter" section. Use the information to solve this 3-part clue.

**Question:** What is an awesome way to raise money for organizations devoted to conservation and animal protection?

\_\_\_\_\_ (3) \_\_\_\_\_ (89) (90) (21) \_\_\_\_\_

**Question:** Where should you adopt your pets from?

\_\_\_\_\_ (62) \_\_\_\_\_ (83) \_\_\_\_\_ (100) \_\_\_\_\_ (6) \_\_\_\_\_ (19) \_\_\_\_\_

**Question:** You should do what to your appliances when they are not in use?

\_\_\_\_\_ (65) \_\_\_\_\_ (35) \_\_\_\_\_

**Step 11:** At the very bottom of the webpage, in the footer, you will find a yellow bulleted list. Click on the third bullet, "Primate Conservation". You will be taken to a new page. Use the information on this page to answer the question.

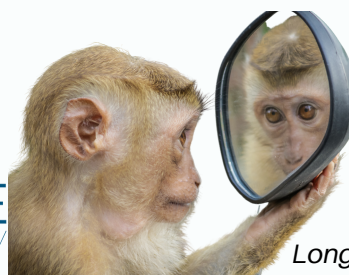
**Question:** Which monkey is one of the world's 25 most endangered primate species?

\_\_\_\_\_ (116) \_\_\_\_\_ (144) \_\_\_\_\_ (64) \_\_\_\_\_ (106) \_\_\_\_\_ (123) \_\_\_\_\_

\_\_\_\_\_ (2) \_\_\_\_\_ (133) \_\_\_\_\_



NEW ENGLAND  
**PRIMATE**  
CONSERVANCY



Long-Tailed Macaque

# CONSERVATION EXPLORATION!

## Page 5

**Step 12:** On the menu at the top of the webpage, hover your mouse cursor over "About". From the dropdown list, click on "What We Do". Use the information on this webpage to solve the next clue.

**Question:** What is the heart of animal protection?

\_\_\_\_\_ (76) \_\_\_\_\_ (48) \_\_\_\_\_ (23)

**Step 13:** Now go back to the top of the page and hover your mouse cursor over "Primate Species Profiles." From the dropdown list, hover your mouse cursor over "Monkeys of Africa." Click on "Guenons" in the dropdown menu. Answer the question below to identify this primate.

**Question:** What species of primate is sometimes called an owl-faced guenon, due to it having large eyes and a round face?

\_\_\_\_\_ (101) \_\_\_\_\_ (67) \_\_\_\_\_ (81)

**Step 14:** Scroll back to the menu at the top of the page and hover your mouse cursor over "Primate Conservation". From the dropdown list, click on "Primates in Animal Studies". You will be taken to a new page that provides an overview of nonhuman primates living in research facilities in the United States. Use the information on this page to answer the next question.

**Question:** Not including birds, rats, and mice that are bred for research, the Animal Welfare Act only protects what?

\_\_\_\_\_ (136) \_\_\_\_\_ (79) \_\_\_\_\_ (75) \_\_\_\_\_ (45)



*Black-Crowned  
Squirrel Monkey*

# CONSERVATION EXPLORATION!

## Page 6

**Step 15:** Scroll to the very bottom of the page. Above the New England Primate Conservancy social media links, you will find a statement that is always at the bottom of every page on the website. This is the final clue!

**Question:** What statement is written at the bottom of every page on the New England Primate Conservancy website?

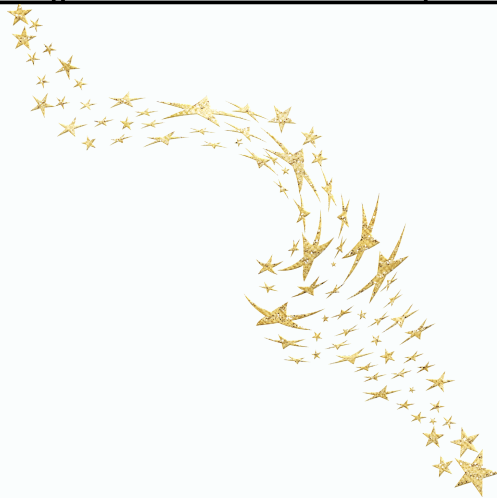
\_\_\_\_\_, \_\_\_\_\_, \_\_\_\_\_, \_\_\_\_\_, \_\_\_\_\_  
(88) (70) (117) (40) (73)

\_\_\_\_\_, \_\_\_\_\_, \_\_\_\_\_, \_\_\_\_\_, \_\_\_\_\_  
(38) (86) (104) (132) (91)

\_\_\_\_\_, \_\_\_\_\_, \_\_\_\_\_, \_\_\_\_\_, \_\_\_\_\_  
(74) (51) (120) (57)

\_\_\_\_\_, \_\_\_\_\_  
(94) (71)

**Congratulations! You have completed the Conservation Exploration! scavenger hunt.**



White-Throated  
Capuchin

# CONSERVATION EXPLORATION!

## Answer Sheet

### Conservation Exploration! Scavenger Hunt Answer Sheet

“

(1) (2) (3) (4) (5) (6) (7) (8) (9) (10) (11) (12)

(13) (14) (15) (16) (17) (18) (19) (20)

(21) (22) (23) (24) (25) (26) (27) (28) (29)

(30) (31) (32) (33) (34) (35) (36)

(37) (38) (39) (40) (41) (42) (43) (44)

(45) (46) (47) (48) (49) (50) (51) (52) (53) (54) (55)

(56) (57) (58) (59) (60) (61) (62) (63) (64) (65) (66)

(67) (68) (69) (70) (71) (72) (73) (74) (75) (76)

(77) (78) (79) (80) (81) (82) (83) (84)

(85) (86) (87) (88) (89) (90) (91) (92) (93) (94)

(95) (96) (97) (98) (99) (100) (101) (102) (103) (104) (105) (106)

(107) (108) (109) (110) (111) (112) (113) (114) (115) (116)

(117) (118) (119) (120) (121) (122)

(123) (124) (125) (126) (127) (128) (129) (130) (131) (132)

(133) (134) (135) (136) (137) (138) (139) (140) (141)

(142) (143) (144) (145)

”



Common Chimpanzee